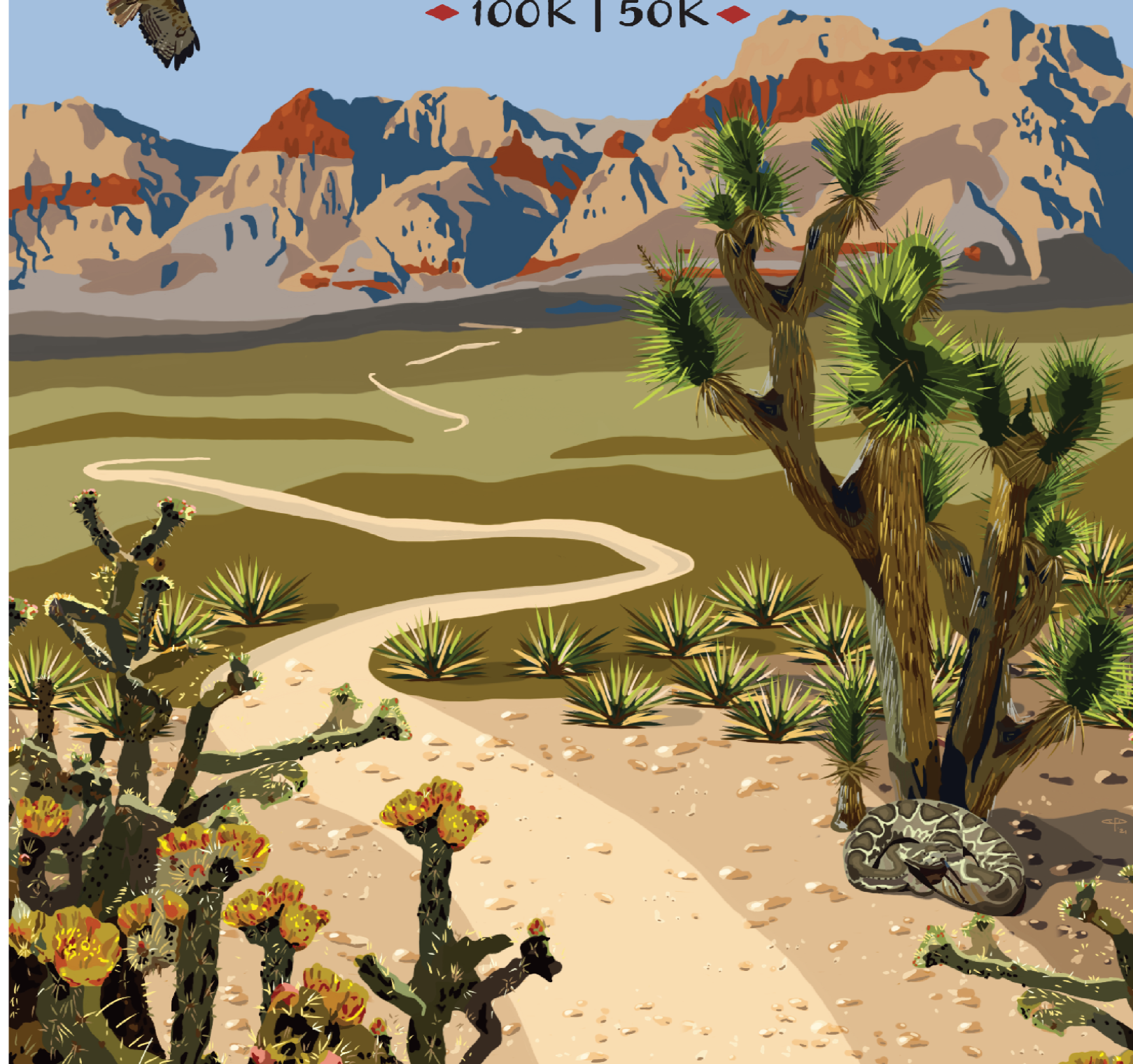


# RED ROCK CANYON

◆ 100K | 50K ◆



# PARTICIPANT INSTRUCTIONS

---

<b>Packet Pickup</b>	<b>7</b>
<b>On-Site Registration and Bib Pickup</b>	<b>8</b>
<b>Race Location, Parking, &amp; Shuttling</b>	<b>9</b>
Race Start Location -	9
<b>Parking &amp; Shuttling</b>	<b>11</b>
100k / 50k / 17k / 12k	11
5k and Spectators	11
Shuttling 100k / 50k / 17k / 12k Participants	12
100k Pre-Race Shuttle Schedule - To Red Rock Visitor Center	12
100k Post-Race Shuttle Schedule - From Blue Diamond to Event Parking	12
50k Pre-Race Shuttle Schedule - To Red Rock Visitor Center	13
50k Post-Race Shuttle Schedule - From Blue Diamond to Event Parking	13
12k/17k Pre-Race Shuttle Schedule - To Blue Diamond Park	14
12k/17k Post-Race Shuttle Schedule - From Blue Diamond to Event Parking	14
5k Pre-Race Shuttle Schedule - NO SHUTTLES	15
<b>Aid Stations</b>	<b>17</b>
Aid Station Maps	18
White Rock - Mile 5.5 - Starting Line to White Rock	19
Pine Creek - Mile 8.5 - White Rock to Pine Creek	19
South Oak Creek - Mile 15.5 - Pine Creek to South Oak Creek	19
Blue Diamond - Mile 19.5 - South Oak Creek to Blue Diamond	19
Blue Diamond - 100k - Mile 27.5 - Landmine Loop back to Blue Diamond	19
Mud Spring -50k Mile 25.75/100k Mile 33.5 - Blue Diamond to Mud Spring	19
50k Finish - Mile 31 - Mud Spring to Blue Diamond Finish	19
Mud Spring Loop - 100k - Mile 37.75 - Mud Spring to Mud Spring	19
Late Night (Pacer Pickup) - 100k - Mile 43.5 - Mud Spring to Late Night	19
Red Valley (Pacer Pickup) - 100k - Mile 47.75 - Late Night to Red Valley	19
Satan's Escalator - 100k - Mile 53.5 - Red Valley to Satan's Escalator	19
Red Valley - 100k - Mile 55.75 - Satan's Escalator to Red Valley	19
Late Night - 100k - Mile 58.25 - Red Valley to Late Night	19
100k Finish Line - 100k - Mile 62.5 - Late Night to Blue Diamond Finish	19
<b>Gear Drop &amp; Pacers</b>	<b>20</b>
South Oak Creek - South Oak Creek Trailhead	20
Blue Diamond - Blue Diamond Park	20
Late Night 100k - Late Night Trailhead	20
Red Valley 100k - Three Mile Smile	20
<b>Pacer Pickup Location</b>	<b>21</b>
<b>Awards</b>	<b>22</b>
<b>Awards and Post Race Festival</b>	<b>23</b>

---

<b>Award Times</b>	<b>23</b>
<b>Come Prepared!</b>	<b>24</b>
<b>Where to Stay</b>	<b>25</b>
Silverton - Directions to Silverton	25
Red Rock Casino - Directions to Red Rock Casino	25
Red Rock Campground - Directions to Red Rock Campground	25
<b>Course Marking</b>	<b>26</b>
<b>Race Timing</b>	<b>27</b>
<b>Live Tracking &amp; Results</b>	<b>28</b>
<b>Medical Support</b>	<b>29</b>
<b>Communications</b>	<b>30</b>
<b>Course Rules</b>	<b>30</b>
<b>Sponsors &amp; Partners</b>	<b>31</b>
<b>Thank You</b>	<b>35</b>

---

**A Special Thanks to Our Title  
Sponsors**



**DODGE CHRYSLER JEEP RAM**



***FABULOUS FREDDY'S***



---

### Event Timeline

Event	Time
First 100k Shuttle Pickup	5:30am - Pickup / 5:45am - Arrival at start
Civil Twilight Begins	5:48am
100k Packet Pickup Begins	5:46am
Second 100k Shuttle Pickup	5:55am - Pickup / 6:10am - Arrival at start
Red Rock Canyon Park Opens	6:00am - Starting Line Setup
Sunrise	6:13am
Third 100k Shuttle Pickup	6:20am - Pickup / 6:35am - Arrival at start
First 50k Shuttle Pickup	6:45am - Pickup / 7:00am - Arrival at start
50k Packet Pickup Begins	6:50am
100k Packet Pickup Closes	6:50am
100k Pre Race Announcements	6:51am
100k Race Begins	7:00am
Second 50k Shuttle Pickup	7:10am - Pickup / 7:25am - Arrival at start
Third 50k Shuttle Pickup	7:35am - Pickup / 7:50am - Arrival at start
50k Packet Pickup Closes	7:50am
5k/12k/17k Packet Pickup Begins	7:50am
50k Pre Race Announcements	7:51am
50k Race Begins	8:00am
First 12k/17k Shuttle Pickup	8:00am - Pickup / 8:20am - Arrival at start
Second 17k Shuttle Pickup	8:15am - Pickup / 8:35am - Arrival at start
Third 17k Shuttle Pickup	8:30am - Pickup / 8:50am - Arrive at start
12k/17k Packet Pickup Closes	8:55am
12k/17k Pre Race Announcements	8:55am

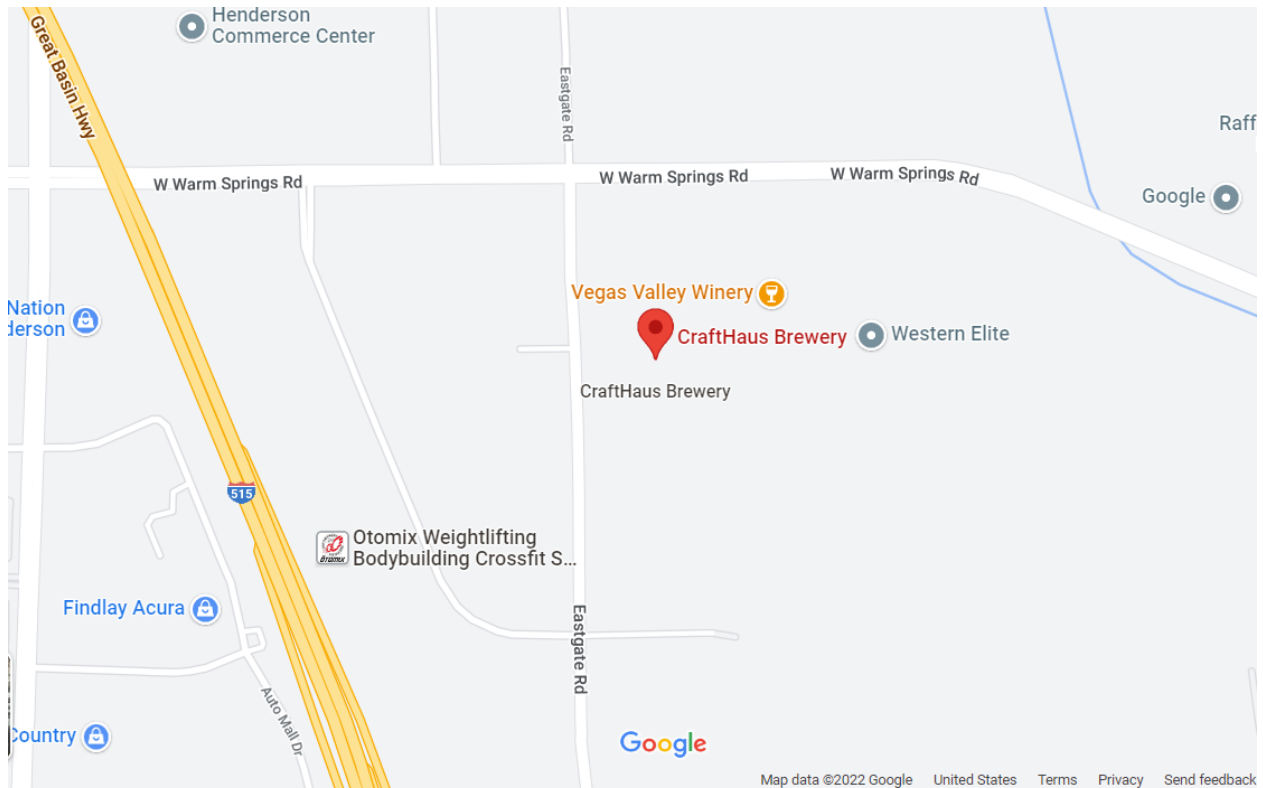
---

12k/17k Race Begins	9:00am
5k Packet Pickup Closes	9:25am
5k Pre Race Announcements	9:25am
5k Race begins	9:30am
First 12k Finishers	9:45am
First 5k Finishers	10:00am
First 17k Finishers	10:15am
First 50k Finishers	12:00pm
First Shuttle to Depart Blue Diamond	10:30am
First 100k Finishers	2:30pm
Sunset	4:36pm
Civil Twilight Ends	5:02pm
Finish Line Tear Down Begins	7:00am Sunday Morning

---

## Packet Pickup

This year packet pickup will be located at the CraftHaus Henderson location:



Packet pickup will be held from 3:30pm to 6:30pm on Friday, Nov 10th 2023

GPS Directions - [CraftHaus Henderson](#)

---

## On-Site Registration and Bib Pickup

If you can't make packet pickup at CraftHaus, no trouble at all. Wake up early on Saturday and pick it up before your run! Make sure to arrive with plenty of time to pick up a bib!! Also make sure to pick up your shirt after your run.

We'll start the 100k packet pickup at 5:50am on race morning.

Please allow for at least 45 minutes before your start time to pick up your bib. Pay close attention to shuttle times below. We have limited capacity!



# Race Location, Parking, & Shuttling

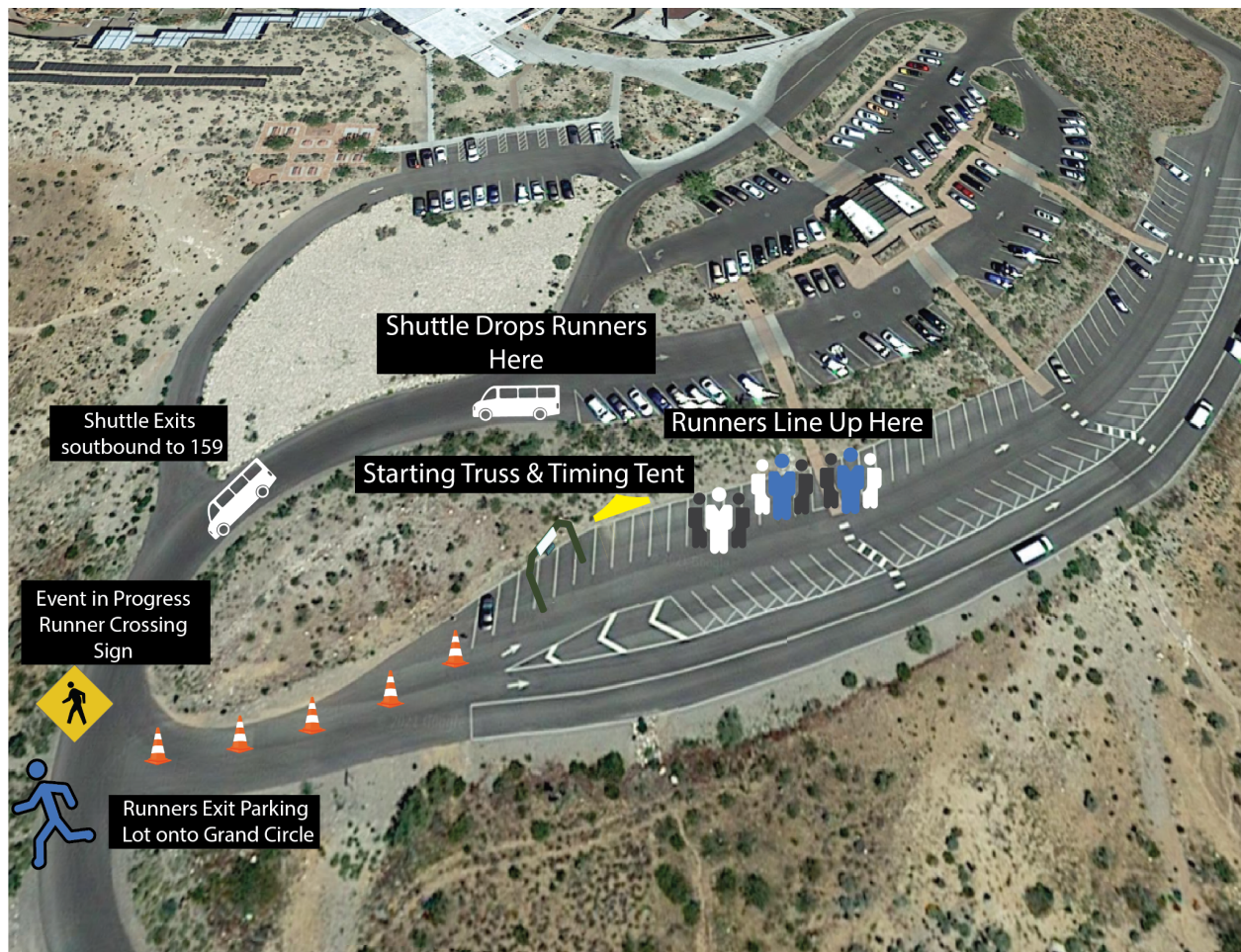
## Race Start Location -

100k/50k - 📍 Red Rock Canyon Visitor Center

5k/12k/17k - 📍 Blue Diamond Park

The starting line for the Red Rock Canyon 100k/50k is located at the entrance of the Red Rock Canyon fee area directly in front of the visitor center. Athletes who require transportation to the starting line will park at a remote location and will be shuttled to Red Rock Canyon Visitor Center or Blue Diamond Park.

## 50k/100k Starting Location





---

5k, 12k and 17k runners will start at Blue Diamond Park.

5k/12k/17k starting location





---

## Parking & Shuttling

100k / 50k / 17k / 12k

Remote Event Parking Location - [Remote Parking and Shuttle Pickup](#)

5k and Spectators

Blue Diamond Parking Location - [5k and Spectator Parking](#)



All 100k, 50k, 17k and 12k participants should park in the far west parking lot and look toward the northwest for the shuttle entrance.

Participants may also be dropped off at the race start location and picked up from Blue Diamond Park following the race. Please understand that we cannot have spectators at the start of the 50k/100k and parking is limited for spectators at the finish in Blue Diamond. It is up to you and your transportation to use discretion when dropping off and picking up. We would prefer it if you shuttled, but we're aware everyone has unique schedules!

---

## Shuttling 100k / 50k / 17k / 12k Participants

### 100k Pre-Race Shuttle Schedule - To Red Rock Visitor Center

Shuttle Departure from Parking Lot	Shuttle Arrival at Starting Line	Capacity Limit
5:30am	5:45am	28
5:55am	6:10am	28
6:20am	6:35am	28

**(please plan to take a early shuttle if you need to pick up your bib)**

**The first shuttle will let participants out in front of the park. Participants will walk a short distance up to the starting area. The park gates don't officially open until 6am.**

### 100k Post-Race Shuttle Schedule - From Blue Diamond to Event Parking

Shuttle Departure from Blue Diamond Park	Shuttle Arrival at Parking Lot	Capacity Limit
2:30pm	3:05pm	14
3:30pm	4:05pm	14
4:30pm	5:05pm	14
5:30pm	6:05pm	14
6:00pm	6:35pm	14
6:30pm	7:05pm	14
7:00pm	7:35pm	14

**(shuttles every half hour from 7:30pm till end of event)**

---

## 50k Pre-Race Shuttle Schedule - To Red Rock Visitor Center

Shuttle Departure from Parking	Shuttle Arrival at Starting Line	Capacity Limit
6:45am	7:00am	42
7:10am	7:25am	42
7:35am	7:50am	42

(please plan to take a early shuttle if you need to pick up your bib)

## 50k Post-Race Shuttle Schedule - From Blue Diamond to Event Parking

Shuttle Departure from Blue Diamond Park	Shuttle Arrival at Parking Lot	Capacity Limit
1:00pm	1:30pm	14
2:30pm	3:05pm	14
3:30pm	4:05pm	14
4:30pm	5:05pm	14
5:30pm	6:05pm	14
6:00pm	6:35pm	14
6:30pm	7:05pm	14
7:00pm	7:35pm	14

**(shuttles every half hour from 7:30pm till end of event)**

---

## 12k/17k Pre-Race Shuttle Schedule - To Blue Diamond Park

Shuttle Departure from Parking	Shuttle Arrival at Starting Line	Capacity Limit
8:00am	8:20am	14
8:15am	8:35am	14
8:30am	8:50am	14

(please plan to take a early shuttle if you need to pick up your bib)

## 12k17k Post-Race Shuttle Schedule - From Blue Diamond to Event Parking

Shuttle Departure from Blue Diamond Park	Shuttle Arrival at Parking Lot	Capacity Limit
10:30am	10:50am	14
11:00am	11:20am	14
11:40am	12:00pm	14
1:00pm	1:30pm	14
2:30pm	3:05pm	14
3:30pm	4:05pm	14
4:30pm	5:05pm	14
5:30pm	6:05pm	14
6:00pm	6:35pm	14



---

## 5k Pre-Race Shuttle Schedule - NO SHUTTLES

5k participants will park at Blue Diamond Park. See map and directions below.

Blue Diamond Parking Location - [5k and Spectator Parking](#)



---

## Aid Stations

See the below table for aid station specifics and cutoff information

Aid Station	Mileage	Location	Hours	Cutoff	Comm	Crew	Drop	Jon
White Rock	5.31	<a href="#">36.166149</a> <a href="#">-115.475356</a>	7:30am - 10:30am	9:50am 100k/50k	Two-way	No	No	No
Pine Creek	10.33	<a href="#">36.125280</a> <a href="#">-115.478882</a>	8:00am - 12:30pm	12:25pm 100k/50k	Two-way	No	No	No
South Oak Creek	15.5	<a href="#">36.089557</a> <a href="#">-115.449428</a>	8:30am - 2:45pm	2:25pm 100k/50k	Two-way	No	Yes	Yes
Blue Diamond	19.5	<a href="#">36.048376</a> .-115. <a href="#">406768</a>	9:00am - 6:00am	3:45pm 100k/50k	Two-way	Yes	Yes	Yes
Blue Diamond 100k	27.5	<a href="#">36.048376</a> .-115. <a href="#">406768</a>	9:00am - 6:00am	6:30pm 100k	Two-way	Yes	Yes	Yes
Mud Spring 50k	25.75	<a href="#">36.026838</a> <a href="#">-115.439359</a>	11:00am - 9:00pm	6:00pm 50k	Two-way	No	No	No
Mud Spring 100k	33.5	<a href="#">36.026838</a> <a href="#">-115.439359</a>	11:00am - 9:00pm	8:30pm 100k	Two-way	No	No	No
Mud Spring 100k	37.75	<a href="#">36.026838</a> <a href="#">-115.439359</a>	11:00am - 9:30pm	9:30pm 100k	Two-way	No	No	No
Finish 50k	31	<a href="#">36.048376</a> .-115. <a href="#">406768</a>	9:00am - 6:00am	7:30pm 50k	Two-way	Yes	Yes	Yes
Late Night 100k	43.5	<a href="#">36.011690</a> <a href="#">-115.430670</a>	12:00pm - 4:45am	11:15pm 100k	Two-way	Yes	No	Yes
Red Valley 100k	47.75	<a href="#">35.989083</a> <a href="#">-115.443139</a>	12:30pm - 3:30am	12:45am 100k	Two-way	No	Yes	Yes
Satan's Escalator 100k	53.5	<a href="#">35.959361</a> <a href="#">-115.443621</a>	1:00pm - 3:00am	2:45am 100k	Two-way	No	No	No
Red Valley 100k	55.75	<a href="#">35.989083</a> <a href="#">-115.443139</a>	12:30pm - 3:30am	3:00am 100k	Two-way	No	Yes	Yes
Late Night 100k	58.25	<a href="#">36.011690</a> <a href="#">-115.430670</a>	11:30am -4:00am	3:45am 100k	Two-way	Yes	No	Yes
Finish 100k	62.5	<a href="#">36.048376</a> .-115. <a href="#">406768</a>	9:00am - 6:00am	5:15am 100k	Two-way	Yes	Yes	Yes



---

## Aid Station Maps

Below is a link to every segment of the entire 100k course:

Full 100k Course Map - [Link to Full 100k Course Map](#)

Full 50k Course Map - [Link to Full 50k Course Map](#)

Full 12k Course Map - [Link to Full 12k Course Map](#)

Full 17k Course Map - [Link to Full 17k Course Map](#)

Full 5k Course Map - [Link to Full 5k Course Map](#)

---

White Rock - Mile 5.5 - [Starting Line to White Rock](#)

Pine Creek - Mile 8.5 - [White Rock to Pine Creek](#)

South Oak Creek - Mile 15.5 - [Pine Creek to South Oak Creek](#)

Blue Diamond - Mile 19.5 - [South Oak Creek to Blue Diamond](#)

Blue Diamond - 100k - Mile 27.5 - [Landmine Loop back to Blue Diamond](#)

Mud Spring -50k Mile 25.75/100k Mile 33.5 - [Blue Diamond to Mud Spring](#)

50k Finish - Mile 31 - [Mud Spring to Blue Diamond Finish](#)

Mud Spring Loop - 100k - Mile 37.75 - [Mud Spring to Mud Spring](#)

Late Night (Pacer Pickup) - 100k - Mile 43.5 - [Mud Spring to Late Night](#)

Red Valley (Pacer Pickup) - 100k - Mile 47.75 - [Late Night to Red Valley](#)

Satan's Escalator - 100k - Mile 53.5 - [Red Valley to Satan's Escalator](#)

Red Valley - 100k - Mile 55.75 - [Satan's Escalator to Red Valley](#)

Late Night - 100k - Mile 58.25 - [Red Valley to Late Night](#)

100k Finish Line - 100k - Mile 62.5 - [Late Night to Blue Diamond Finish](#)

---

## Gear Drop & Pacers

Gear Drop for 50k & 100k will be located at the starting line. Please clearly mark your bags with your full name, bib number, contact number, and drop bag location. Your bags will be placed at drop bag locations according to your label! Bags without a label will be taken to the finish line bag drop in Blue Diamond. **No pacers for 50k runners.**

### Bag Drop Locations and Crew Access for RRC100k:

#### South Oak Creek - South Oak Creek Trailhead

- Roughly mile 15.5
- Bag Drop
- Portable toilet
- No Crew access - limited space

#### Blue Diamond - Blue Diamond Park

- Roughly mile 19.5, 27.5, & Finish
- Bag Drop
- Park toilet
- Crew Access

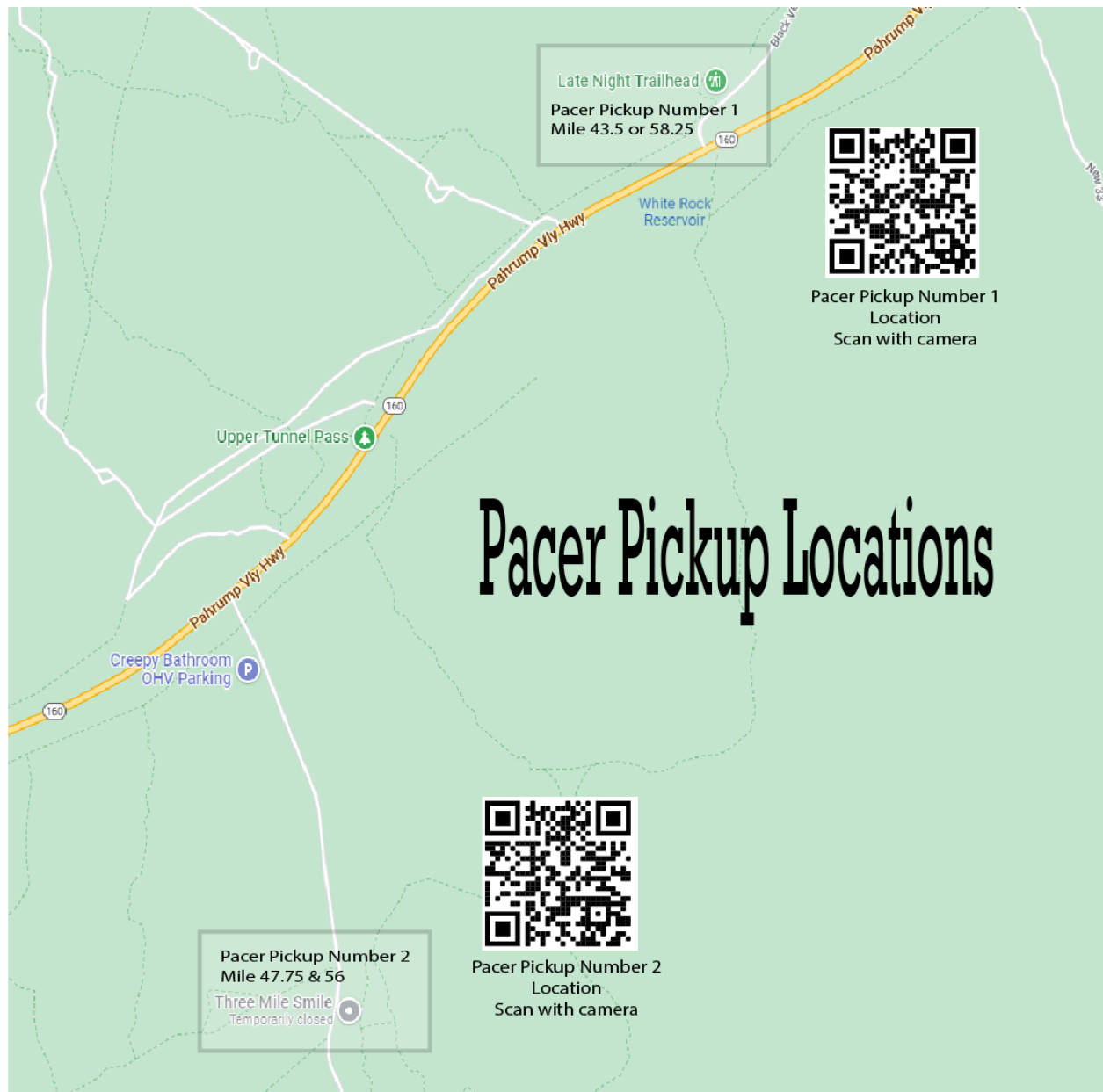
#### Late Night 100k - Late Night Trailhead

- Roughly mile 43.5 & 58.25
- BLM pit toilet
- Crew access & Pacer Pickup number 1

#### Red Valley 100k - [Red Valley Trailhead](#)

- Roughly mile 47.75 & 56
- Portable toilet
- Crew access
- Pacer pickup number 2

## Pacer Pickup Location



Pacer Pickup 1 - [Late Night Trailhead](#) / Pacer Pickup 2 - [Red Valley Trailhead](#)

Runners can pick-up a pacer at mile 43.5 or 58.25 at the Late Night aid station. We would recommend a pacer for slower runners that feel they will still be on the course after the sun goes down. Runners can also pick up their pacer at Red Valley aid station at mile 47.75 or 56.

---

## Awards



We're working with Pirate Monkey again to bring you great medals, awards and swag. We love their stuff and we're confident you'll agree! Always locally produced and distributed!

We'll have podium awards for top runners of each distance!

All runners will receive a race shirt, beer, food, and a finisher award!

---

## Awards and Post Race Festival

### Award Times

Distance	Time
5k / 12k / 17k	Between 10:00am and 12:00pm
50k	Between 1:30pm and 2:30pm
100k	Between 4:30pm and 5:30pm

Dependent on a complete podium (1st, 2nd & 3rd) finishers

We'll be cooking up some food for you after your race. Swing by the kitchen and visit the kitchen to get hooked up!

We'll also have cold beer from CraftHaus!





---

## Come Prepared!


Come prepared for warmer conditions in the day and cold conditions at night. Review the drop bag locations carefully and ensure that you leave warm clothes for the nighttime hours! It will get really cool for the 100k runners through the early morning hours if you're still on course! The temperature will get into the low 40s on Saturday night / Sunday morning.

There is a chance that we can get a wild winter storm in November so please come prepared for cold conditions by packing layers in your drop bags. If the sun is shining it will be very comfortable running conditions, but when the clouds move in things change fast!

However, we didn't choose to host this race in November randomly. The weather is usually stellar for running in Vegas this time of year, so we're looking forward to some great running conditions for you!

Weather forecast as of 11/8/2023

SAT  
11/11

 **66°** /46°

0%

Brilliant sunshine

RealFeel™	<b>68°</b>	Max UV Index	<b>3 Moderate</b>
RealFeel Shade™	<b>63°</b>	Wind	<b>NE 6 mph</b>

---

## Where to Stay

Silverton - [Directions to Silverton](#)

The Silverton is roughly 15 minutes from Desert Diamond Baseball Complex (Event Parking Lot) and 21 minutes from the finish line in Blue Diamond.

Red Rock Casino - [Directions to Red Rock Casino](#)

If you're coming from out of town and you have someone to transport you to and from the event, we'd recommend staying at Red Rock Station. Red Rock Station is just 10 minutes to the race start. The finish line in Blue Diamond is roughly 20 minutes away and event parking is roughly 23 minutes. Please note that if you're getting dropped off, there is a \$15 dollar fee to enter the park!

Red Rock Campground - [Directions to Red Rock Campground](#)

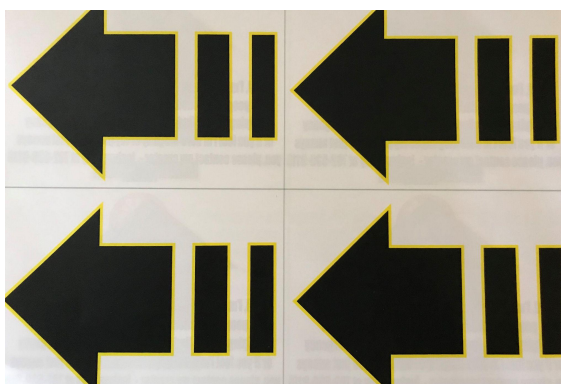
If you're up for camping and you have someone to transport you to/from the event, RRC Campground is just 5 minutes from the starting line. The finish line in Blue Diamond is roughly 15 minutes away. Event parking is about 26 minutes. Please note that if you're getting dropped off, there is a \$15 dollar fee to enter the park! I would hurry, available spots are looking slim!

Check out the Red Rock fee page for specific pricing on park entrance and annual passes: <https://www.redrockcanyonlv.org/fees/>

---

## Course Marking

The race course will be heavily marked every .25 mile with reflective surveyor flags. The surveyor flags will have a Desert Grown label attached with emergency contact information. In addition, a combination of generic and specific mileage arrows will be used to direct you at major intersections with other trail systems that cross the course. Look for many of these trail markers to be affixed to existing Red Rock trail sign posts and signs. These signs will only be used when you must leave a current trail to get on a new trail! Otherwise, look for surveyor flags to lead your way at small trailforks.



---

## Race Timing

All runners will be provided with a chip start at the beginning of the race. Runners will then be manually checked in and out of every aid station along the course. Timing software will catch a split time at roughly mile 19.5 when you pass through Blue Diamond. Another split will be captured for 100k runners at mile 27.5 at Blue Diamond for their second time. Finally, a finish time will be recorded when you come back into Blue Diamond to finish the race.

All final results will be loaded to Ultrasignup immediately after the race. Times will also be displayed live on Arrowhead Results as runners finish their race.



---

## Live Tracking & Results

Track your athlete as they cross through Blue Diamond and Late Night for the 100k runners. All runners finishing times will also be recorded here throughout the day:

100k - [Red Rock Canyon 100k Results](#)

50k - [Red Rock Canyon 50k Results](#)

5k - [Red Rock Canyon 5k Results](#)

12k - [Red Rock Canyon 12k Results](#)

17k - [Red Rock Canyon 17k Results](#)

All final results will be posted on Ultrsignup - [Ultrsignup Final Results](#)



---

## Medical Support

We'll have professional nursing staff and rescue standing by to clean you up if you need a little help. They will be armed with an OHV to reach anyone who might need some help anywhere on the course!





---

## Communications

We'll have 2-way radios at all aid stations and the start/finish area for communications between points on course and for emergencies. Not to mention keeping tabs on all of you on the course!

## Course Rules

It's easy! Ensure that you carry respect with you while running on the trails in our home. Please don't litter and give plenty of room to plant life and animals in the area. Be kind to other runners and encourage future participation in our sport; show appreciation for the volunteers who support you, and remember to smile! This stuff is just for fun!



---

## Sponsors & Partners

- CraftHaus
  - Locations Downtown and in Henderson!
- vFuel
- Fit Chefs
- Maximum Velocity
- Limitless Performance Therapy
  - Massage and PT - Look for Limitless to take care of your post race aches!
- Race Shirt Sponsors
  - Assemblyman Steve Yeager
  - Cottonwood Station
  - Fabulous Freddy's - Aid station food!
  - Honest Hospitality - Aid station volunteers!
  - Hudson Dental
  - Khoury's Fine Wine and Liquor
  - Limitless
  - Motum Athletics
  - Ronald McDonald Charities
  - Chapman Dodge
  - US Foods







**DODGE CHRYSLER JEEP RAM**



***FABULOUS FREDDY'S***



---

## Thank You

You can throw on a pair of shoes and run anywhere you like. We strive to foster that simplicity by creating an atmosphere where you can simply do what you love, with the people you care about, in the places you want to be.

A special thanks to all the great volunteers and friends who make Desert Grown events possible.

Thank you for running & volunteering with us!